



# **Rhima DVS and DVS+**

*Washer disinfectant for human waste containers*



**Rhima Australia**  
[www.rhima.com.au](http://www.rhima.com.au)  
**Rhima New Zealand**  
[www.rhima.co.nz](http://www.rhima.co.nz)  
**Rhima Singapore**  
[www.rhima.sg](http://www.rhima.sg)





## High-Tech Features of the Rhima DVS and DVS+ washer disinfectors



### E.T.S. - Empty Total System

System to automatically drain water at the end of each cycle from the water pump, the water storage tank and the pipes. This ensures freedom from microbial contamination inside the machine. According to the standard EN ISO 15883-1.3.2.1 & 5.5.1.1



### S.D.S. (Self Disinfection System)

Function that allows the machine to automatically perform a disinfection program 24 hours after the last cycle. This system prevents bacterial growth inside the machine.



### D.C.S. (Drain Control System)

Safety device that prevents the use of the machine if the drain trap is clogged.



### D.V.S. (Disinfection Validation System)

3 PT1000 temperature probes in the washing chamber to ensure active disinfection monitoring.



### Automatic Door Opening (DVS+ Only)

The operator opens and closes the door by pushing the foot pedal, placed on the bottom of the machine or by activating the optical sensor on the touch panel.



### No Touch Technology (DVS+ Only)

Passing the hand, remotely, in front of the optical sensor, the operator can start the washing cycle. Reduce the risk of cross infection.





## High Load capacity

Up to 4 urine bottles can be disinfected at once using device.



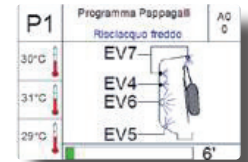
## E.H.M.I. - Electronic Nozzles Control

Graphic display for easy communication between machine and user to ensure detailed and clear information during operation and instructions in case of alarm.



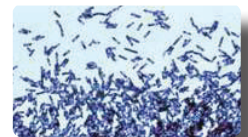
## E.N.C. - Electronic Nozzles Control

Intelligent and optimised control of water flow, pressure and injection system to improve the washing performance.



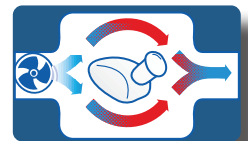
## HDS - High Disinfection system

Special program with direct detergent spraying appliance and the possibility to set the cleaning action time of the detergent to increase the cleaning efficiency. Test approved by the University of Bonn (Germany).



## A.C.S. - Air Cooling System

After the disinfection phase, cold air is introduced by a fan in the washing chamber, to lower the internal temperature and partially dry the disinfected containers. By condensing the excess steam, it prevents the AEROSOL effect for the operator and the thermodynamic contamination of the room.



## Aseptic Technology (DVS+ Only)

The new NO TOUCH optical sensor ensures total protection of surfaces and helps to stop the spread of viruses, counteracting COVID-19. Thanks to the motion sensors the operators' hands will never come into contact with the machine, ensuring the highest standard of hygiene and the total absence of bacteria on the machine surfaces.



## Multiwash Function (Optional)

Complete application for washing and disinfecting other utensils and containers such as suction bottles, buckets, kidney bowls, theatre overshoes, toilet brushes and vases.



## APP with Bluetooth application (Android Only)

The user-friendly application, for Android tablets and smartphones, simplifies and speeds up machine monitoring and programming with online improvement updates. The connection between machines and Android device can be done without wires, using a bluetooth application.



# OPENING AND CLOSING SYSTEM

## DVS Manual Opening



OPENING



CLOSING



START-UP

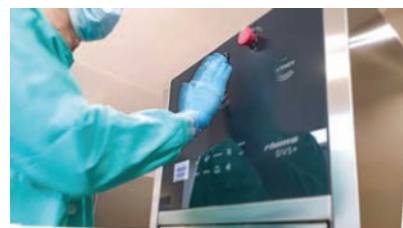
## DVS+ with automatic opening and foot pedal for closing and starting



## DVS+ NO TOUCH TECHNOLOGY with opening/closing and no touch automatic start



OPENING/CLOSING WITH OPTICAL SENSOR



START-UP WITH OPTICAL SENSOR

# TECHNICAL FEATURES

External Laboratory Certificate for validation of Type Test according to Standards EN ISO 15883-1/3	<b>STANDARD</b>
DVGW certified plumbing system, designed to isolate the portable water pipeline system (water-gap) as prescribed by European Standard EN1717	<b>STANDARD</b>
Manufactured in AISI 304 stainless steel brushed Scotch Brite Finish	<b>STANDARD</b>
Washing tank made AISI 316 stainless steel (DIN 1.4404) with rounded corners and no welding	<b>STANDARD</b>
USB port for connection to a PC and for software upgrades, statistical data on the last 10,000 cycles, technical operation check, disinfection monitoring during the operating cycle	<b>STANDARD</b>
Complete with 4 washing programs: Reduced - Normal - Intensive - EXTRA	<b>STANDARD</b>
Thermal disinfection with a built-in 3.2kW steam generator complete with internal temperature control	<b>STANDARD</b>
A value setting between 60 and 6000. The machine displays A value reached and its calculation so that disinfection conditions according to EN ISO 15883-1/3. Thermal disinfection up to 95°C and A=6000	<b>STANDARD</b>
PT1000 temperature sensor in the washing chamber	<b>STANDARD</b>
Descaler liquid dosing pump with reserve warning, leak indicator and machine block in the event there is no more liquid	<b>STANDARD</b>
Flow-meter to monitor the correct quantity of liquid used during operation (EN ISO 15883-1 p.5.7.1 - 5.7.2)	<b>STANDARD</b>
Dosing pump for liquid detergent with reserve warning, leak indicator and machine block in the event there is no more liquid	<b>STANDARD</b>
The following applications can be included: <input type="checkbox"/> APP: Bluetooth application for wireless communication between machine and Android devices <input type="checkbox"/> WinATOSMonitor: USB application for uploading programs directly from a USB flash drive	<b>STANDARD</b>
Printer application on the front panel of the machine	<b>OPTIONAL</b>
NO TOUCH TECHNOLOGY	<b>DVS+ ONLY</b>

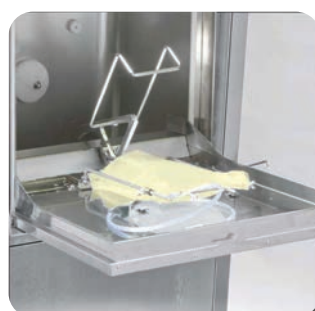
# SUPPORT AND ACCESSORIES

## Supports for bedpans and urinals

For washing of:

- Bedpan & urinal
- Commode & urinal
- Bedpan with cover & urinal
- Commode with cover & urinal

The bedpans and the urinals are emptied automatically when the door is closed. It is possible to disinfect up to 4 urinals per cycle.



# MULTIWASHER BASKET (OPTIONAL)

This revolutionary appliance makes it possible to use the washer disinfector as a multi-purpose piece of equipment to decontaminate general items in hospitals, clinics or homes for the elderly where standards of hygiene must comply with the most demanding principles of disinfection. The Multiwasher basket is suitable for any kind of accessory or container that does not have to be retreated in the sterilisation department.

The use of this additional application in the Rhima washer disinfectors allow:

- Washing by rotating spray arms (mechanical action), disinfection process enhanced by the use of detergent (chemical action) and thermal disinfection in less than 15 minutes.
- High disinfection for general medical utensils (not for use in the operating theatre)
- Thermal disinfection up to 95°C and A=6000 (in compliance with EN ISO 15883)
- Flexible and easy loading to wash and disinfect a wide variety of devices



Special program for  
**MULTIWASHER**  
function

(this application can be  
installed afterwards)





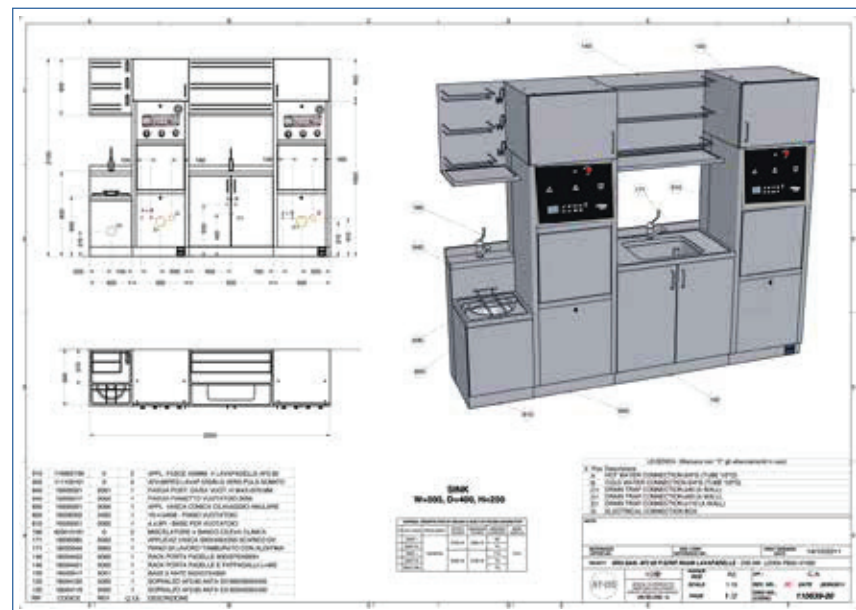
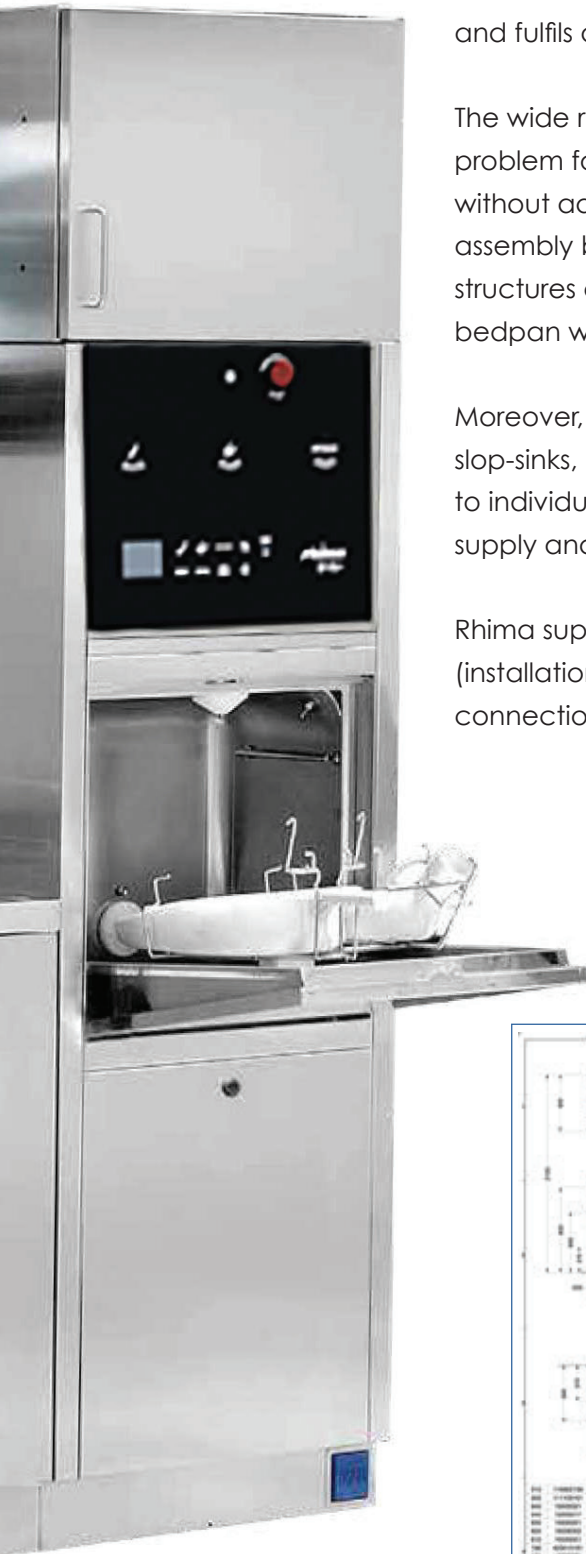
# TURN KEY UTILITY ROOM PROJECTS

The Rhima DVS and DVS+ washer disinfectors are adaptable to each room and fulfils any planning requirement.

The wide range of models available in this line solves any installation problem for completely furnished dirty utility rooms or for assisted bathrooms without additional costs and with the advantage of fast installation and assembly both in new structures and, above all, when renovating old structures or replacing old machines. There are solutions for installing bedpan washers: on the floor, wall-hung or built-in.

Moreover, it is possible to install the compact solution which combines slop-sinks, basins and cabinets. These combined sluice units, adaptable to individual customer requirements, can be delivered with a single water supply and drain system.

Rhima supports its customers providing technical documentation (installation drawings, customised layouts, plumbing and electrical connection drawings) for turn key utility room projects.



# SLUICE ROOM ACCESSORIES (OPTIONAL)

## STAINLESS STEEL DRIP AND STORAGE SHELVES



Wall mounted drip and storage shelf BEDPANS AND URINALS



Wall mounted drip and storage shelf URINALS



Wall mounted drip and storage shelf BEDPANS



Wall mounted storage with shelves

## STORAGE CABINETS AND WORK TOPS WITH BASINS



**TOP CABINET IN STAINLESS STEEL**

Closed with hinged door to be installed above the washing and disinfection machine.



**WALL CABINET IN STAINLESS STEEL**

Stainless steel wall-hung cabinets open or with hinged doors. Internal heating available.



**WORK TOP WITH BASIN**

Stainless steel work tops with basins in customised dimensions. RADIUS 15° version available to prevent dirt deposits and to ease cleaning.

## OTHER ACCESSORIES

- Stand alone cabinetry and cupboards
- Stainless steel or CORIAN customised work tops
- Stainless steel covering and panelling
- Micro-controlled soap dispenser/mixer
- Manual or automatic photocell water taps

Rhima can also provide water softener and detergent liquids in 5 litre bottles, tested and approved in compliance with EN ISO 15883-1/3 to ensure better cleaning and longer equipment life.



### **Australia: MEDIWASH 5 Litre**

A non caustic, non chlorine washing liquid that gives superior results in our range of glasswashers. Only to be used in combination with automatic dispensers. This detergent is TGA approved. Available in 2 x 5L carton.

### **New Zealand: MEDIWASH 2.0 - 5 Litre**

### **Singapore: RHIMAWASH - 5 Litre**



# RHIMA CARE

## SERVICE AND MAINTENANCE FOR YOUR WASHER

### Does my washer/disinfector need regular service and maintenance?

Whether your Rhima washer/disinfector is in or out of warranty, it needs regular professional maintenance to ensure it is operating at optimum performance. Regular maintenance can also reduce running costs and greatly extend your washer's useful life. As importantly, a well serviced machine helps to safeguard against unexpected, inconvenient, expensive breakdowns.

### Does my washer/disinfector comply with ISO 15883 and AS1487 standards?

Rhima provides thermal validation services that comply with Australasian and international standards. Our specialist validation technicians are trained in the use of highly sophisticated, calibrated test equipment and will ensure that your washer/disinfectors meet these strict standards for disinfection. The validation services that Rhima provide should not be confused with a simple 'temperature check' offered by other providers which do not comply to either standard. While performing the validation service on each machine, Rhima technicians also perform a full preventative maintenance on the machine, ensuring that your washer/disinfectors are performing to manufacturer's specifications.

### My washer needs to be fixed and it's 11AM on a Sunday morning. Who do I call?

Rhima provides professional washing equipment to professionals just like you. We understand that businesses do not all operate 9 to 5 and neither do we. Call us at any time and a service representative will respond to your call. Our first priority is to try to get you operational over the phone, however if this is not possible, you will be given the option of waiting until the next business day to log a service call or if you can't wait, then in most cases a service technician will be arranged to attend your premises as soon as possible, usually same day.

### BENEFITS OF RHIMA PREVENTATIVE MAINTENANCE

- Confidence that your washer/disinfectors meet international and Australasian standards
- Improved washer efficiency and reliability
- Priority service in the event of repairs being required
- Reduction in unexpected breakdowns and costly stoppages
- Savings on total maintenance costs
- Optimisation of detergent and rinse additive usage
- Prolonged service life
- 24/7 service response
- First 2 hours of labour on breakdowns\*

\*Callout fee applies. Not valid for faults not directly related to washer i.e., interruption to services (power, water & drainage) or operator

We can tailor a Rhima Care Validation and Preventative Maintenance Agreement to suit your needs.





*rethink*  
○ *reuse*  
**rhima**



Rhima Australia Pty Ltd  
[www.rhima.com.au](http://www.rhima.com.au)  
Tel: 1300 347 944

Rhima New Zealand  
[www.rhima.co.nz](http://www.rhima.co.nz)  
Tel: +64 9414 5575

Rhima Singapore  
[www.rhima.sg](http://www.rhima.sg)  
Tel: +65 9107 8943